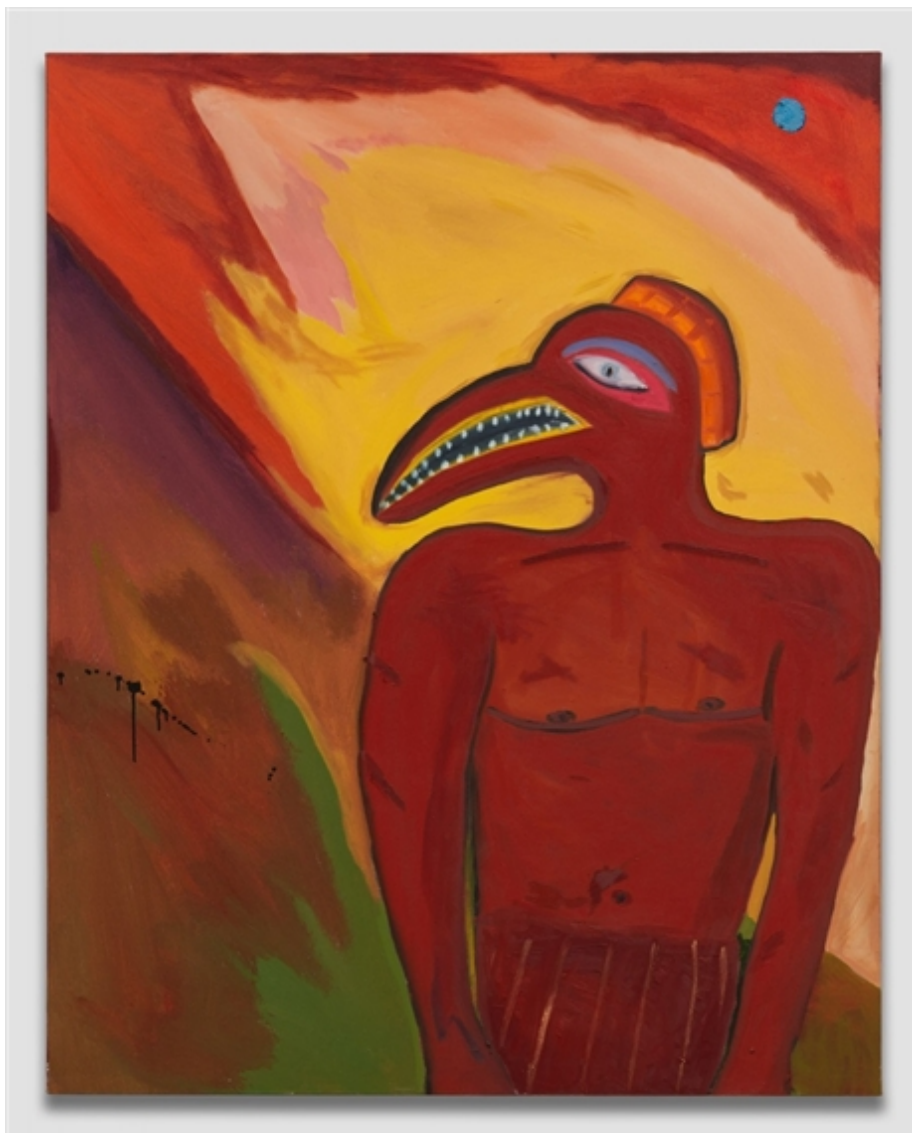


Almine Rech Gallery

Almine Rech made a name for herself as a powerful force in the otherwise male dominated Parisian art scene, opening her first gallery in Paris with a light installation by (the then unknown) artist **James Turrell**. Exploding out of the Parisian scene, Rech opened a gallery in Brussels 2007. Alongside works by major established artists, the Brussels gallery offers a platform for showcasing works by young and upcoming artists, in line with Rech's personal history of discovering and nurturing surprising new talent. The gallery has recently carved out a particular niche for itself as the home of Brussels' minimal and conceptual art.

From 18 April - 19 May, the gallery will exhibit *Solid Ghosts*, a solo display by **Marcus Jahmal**. Combining Fauvist, Cubist, and Expressionist influences, Jahmal's paintings depict worlds in which "interior spaces have made way for dreamscapes, where jungle, savannah and desert mesh together. Planes of violently and flamboyantly contrasting colour constitute a dry, abstract background from which characters, masks, shamans, and wild animals burst forth." (Almine Rech Gallery). A visit to **Jahmal's exhibition** at Almine Rech Gallery is a unique chance to discover an emerging talent before they're launched to international success.



Marcus Jahmal (1990), *Solid Ghosts* runs at Almine Rech Gallery from April 10 - May 19.