

ALMINE RECH GALLERY

# MARCUS JAHMAL

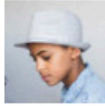
## 'Metavisions'

December 10, 2016 - January 29, 2017 • New York

SEARCH

The New York Times

1 Self-Criticism Was  
der, These Portraits  
Revolutionary



In Serbian Refugee Center,  
a 'Little Picasso' Dreams of  
Art and Asylum



Columbus, Ind., Renews  
Its Big Design Legacy



With Color and Fury, Anti-  
American Posters Appear  
in North Korea

# What to See in New York Art Galleries This Week

By ROBERTA SMITH, HOLLAND COTTER, WILL HEINRICH and MARTHA SCHWENDENER JAN. 5, 2017



Marcus Jahmal's color-rich oil painting "Dock at dusk" is one of the six pieces that make up this Brooklyn artist's Manhattan solo debut, which is at the Canada gallery through Jan. 29. Courtesy of the artist and Canada, New York



Divisive Monuments? Put Them All in a Taiwan Park



Who Is Really Making 'Chihuly Art'?



SHOW US YOUR WALL  
For Tony Kushner, It's Angels Over the Breakfast Nook

## MARCUS JAHMAL

*Through Jan. 29. Canada, 333 Broome Street, Manhattan; 212-925-4631, [canadanewyork.com](http://canadanewyork.com).*

Marcus Jahmal is following his January 2016 debut at FiveMyles, in Brooklyn, with a strong Manhattan debut, [titled "Metavisions,"](#) at Canada. Mr. Jahmal took up painting about seven years ago and appears to have a sophisticated gift for it.

Self-taught, as most painters ultimately are, he has learned a great deal from looking at paintings in galleries, museums and books. He started out working with acrylic but graduated to oils, which he handles with loopy aplomb. His main love is color, which he uses stunningly, but he exploits everything — space, surface, color, image — to create various incongruities. Favored devices include depictions of mirrors, their reflections, or paintings within paintings.

Most of the six paintings here depict interiors with great [Gustonesque](#) floors that may tilt or plunge while walls encroach. In "The blaze putting itself out," two facing walls — one of deep aqua and the other wine red — press inward while three fire extinguishers evoking sorcerer's apprentices take aim at a burning cast-iron stove. A chubby radiator looks on. In "Dock at dusk," a brightly appointed living room includes a ship's mooring and a wall doubling as night sky. In "Meta vision," a brushy green plant all but merges with a brushy green wall against which leans a squiggle of a guitar (hello, modernism).

Mr. Jahmal is especially impressive on the open, outdoor brick expanse of "Fishes dream." Two fish join some clouds in the blue sky. A lamb and a coral snake patrol the foreground. Center stage are four Greek columns with tightly curled Ionic capitals and fluting defined by shifts in soft, exquisite colors. There is much promise here.

ROBERTA SMITH