

Artsy: 'History Repeats Itself in the Bruce High Quality Foundation's Apocalyptic Landscapes', by Alexxa Gotthardt, November 5th, 2014

FEATURED BY ARTSY

History Repeats Itself in the Bruce High Quality Foundation's Apocalyptic Landscapes

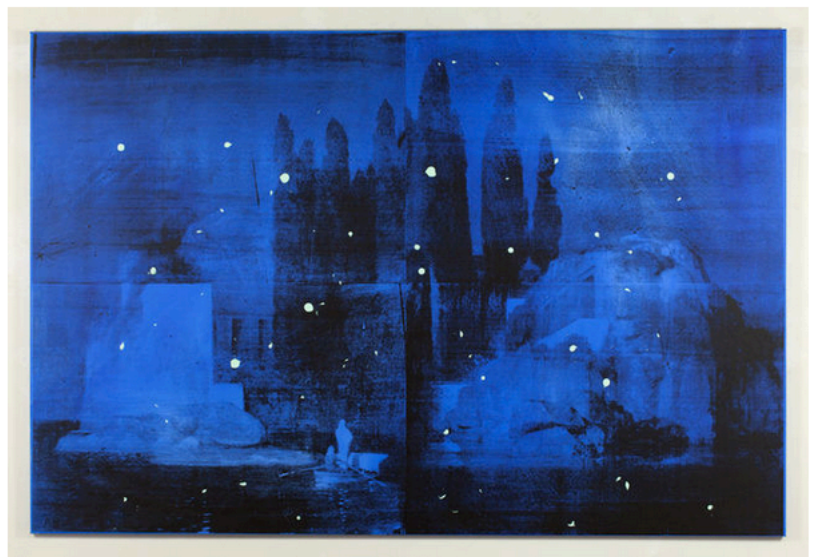
A ARTSY EDITORIAL
8 DAYS AGO

In the [Bruce High Quality Foundation's](#) (BHQF) 2013 exhibition at [The Brooklyn Museum](#), the polarizing collective of millennial artists premiered a video about art world zombies called *Isle of the Dead*. The work presents an alternate reality in which the entire art world is offed by a mysterious disaster. Some players resurrect as a troupe of malcontent walking dead who sing an ode (Bryan Adams' *Summer of '69*) to an age when art felt less commercial and more culturally motivating.

In "*Isles of the Dead*" at [McClain Gallery](#) in Houston, BHQF teases out the comically cynical narrative introduced in last year's retrospective. Both the 2013 video and the exhibition of new silkscreens and sculptures borrow the title of an [Arnold Böcklin](#) painting from the late 1880s. It depicts a romantic scene in which a boat carries two figures, one shrouded, toward a small island (connections have been drawn to Greek mythology's Charon transporting souls to the afterlife). The famous work, of which Böcklin made five versions, has inspired artistic output—and many copies—across centuries and mediums.



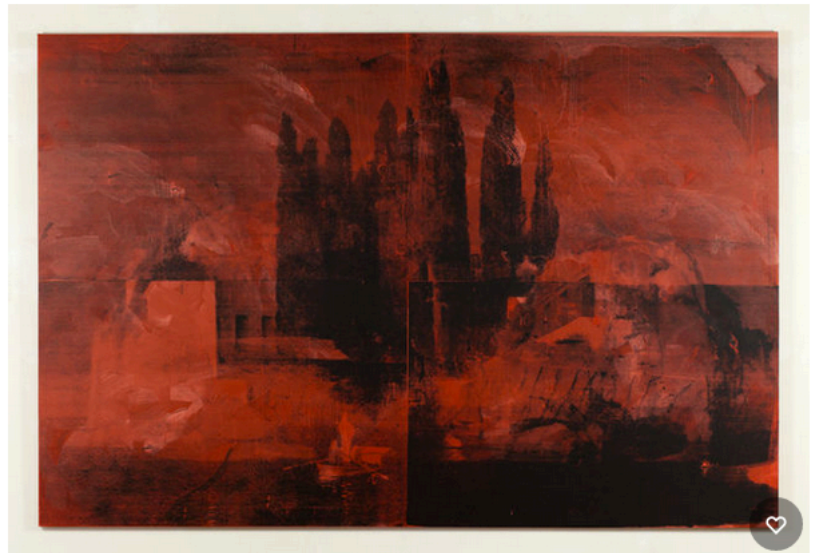
The Bruce High Quality Foundation
Isle of the Dead, 2014
McClain Gallery



The Bruce High Quality Foundation
Isle of the Dead, 2014
McClain Gallery

In the Bruce High Quality Foundation's (BHQF) 2013 exhibition at The Brooklyn Museum, the polarizing collective of millennial artists premiered a video about art world zombies called *Isle of the Dead*. The work presents an alternate reality in which the entire art world is offed by a mysterious disaster. Some players resurrect as a troupe of malcontent walking dead who sing an ode (Bryan Adams' *Summer of '69*) to an age when art felt less commercial and more culturally motivating.

In "*Isles of the Dead*" at McClain Gallery in Houston, BHQF teases out the comically cynical narrative introduced in last year's retrospective. Both the 2013 video and the exhibition of new silkscreens and sculptures borrow the title of an Arnold Böcklin painting from the late 1880s. It depicts a romantic scene in which a boat carries two figures, one shrouded, toward a small island (connections have been drawn to Greek mythology's Charon transporting souls to the afterlife). The famous work, of which Böcklin made five versions, has inspired artistic output—and many copies—across centuries and mediums.



Bruce High Quality Foundation
Isle of the Dead, 2014
McClain Gallery



The Bruce High Quality Foundation
Isle of the Dead, 2014
McClain Gallery



The Bruce High Quality Foundation
Isle of the Dead, 2014
McClain Gallery



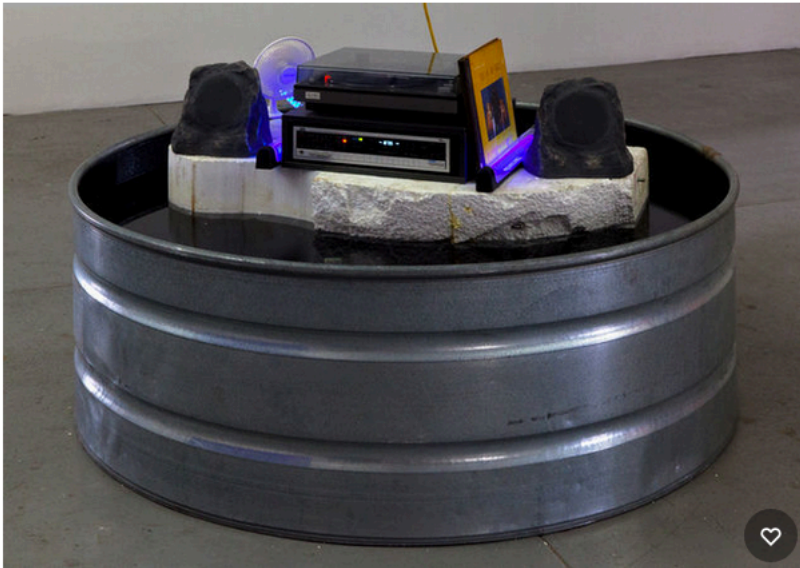
The Bruce High Quality Foundation
Isle of the Dead, 2014
 McClain Gallery



Bruce High Quality Foundation
Isle of the Dead, 2014
 McClain Gallery



Bruce High Quality Foundation
Isle of the Dead, 2014
 McClain Gallery



The Bruce High Quality Foundation
Isle of the Dead, 2014
McClain Gallery