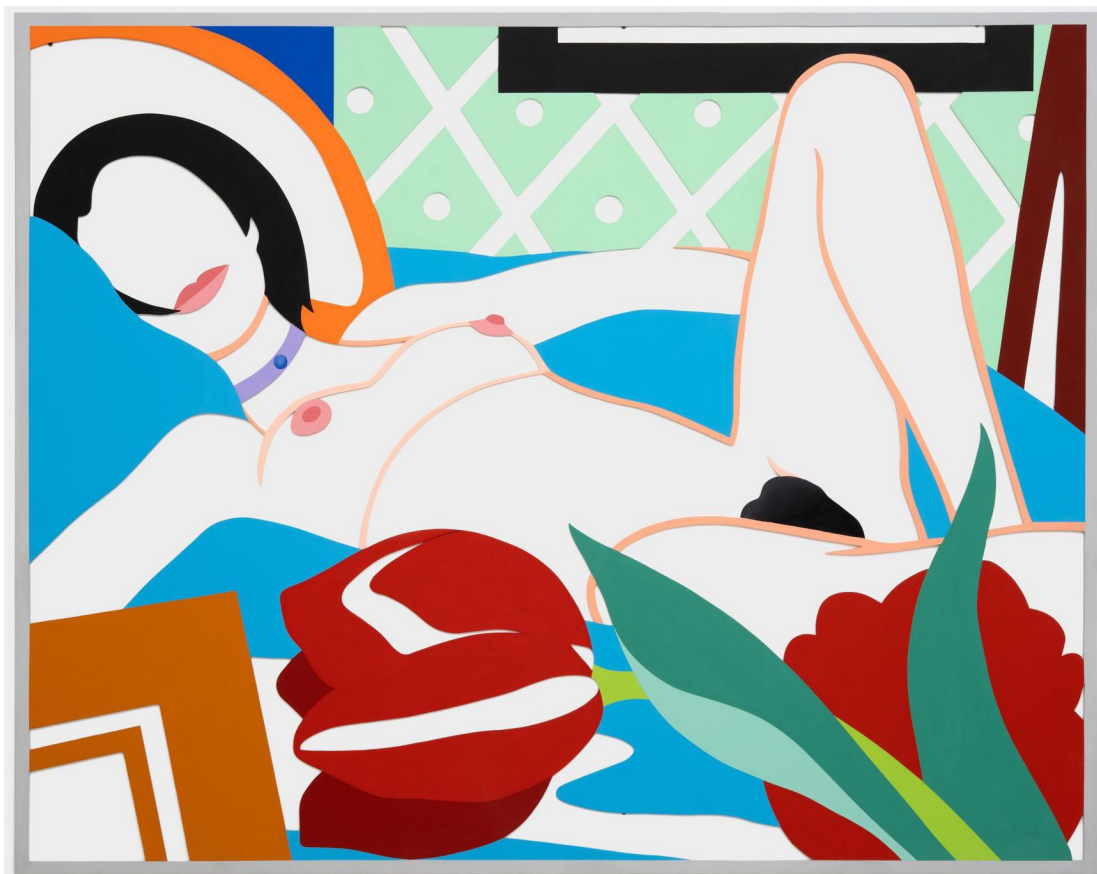


Paris Capitale
Galerie Almine Rech: Tom Wesselmann

Summer 2022.



Tom Wesselmann, "Monica With Tulips", 1989.

© 2022 THE ESTATE OF TOM WESSELMANN / ARTISTS RIGHTS SOCIETY (ARS), NEW YORK PHOTO : JEFFREY STURGES

« Subtlety is a European concept that doesn't interest me, » explains Tom Wesselmann. And yet his work, especially his late pieces, make him the American heir of Matisse. In these works, he uses multiple preliminary studies and a variety of media, enthusiastically dipping into his library of works on the master spellbound by the sunny skies of Nice. Here, Wesselmann offers creative variations on nudes and still lifes classic themes dear to Matisse and expresses the eroticism and harmony cherished by both painters.