

By Keith Estiler
August 27, 2020

Marcus Jansen Explores Power Structures in "E Pluribus Unum" Exhibition

Expressive paintings that grapple with socio-political issues.



The Cornell Fine Arts Museum in Florida is gearing up to present the first solo exhibition of Marcus Jansen in the United States titled “E Pluribus Unum.” Residing and operating from the Bronx, New York, Jansen creates colorful figurative-meets-abstract works that grapple with socio-political issues.

Jansen is recognized for his paintings that incorporate visuals of war which stem from his time served in the US Armed Forces while deployed in conflict zones during Operation Desert Shield, Desert Storm, and Asia, among other influences stemming from military conflicts now and then. The artist’s practice is largely devoted to exploring structures of power and how human beings cope with dire situations.

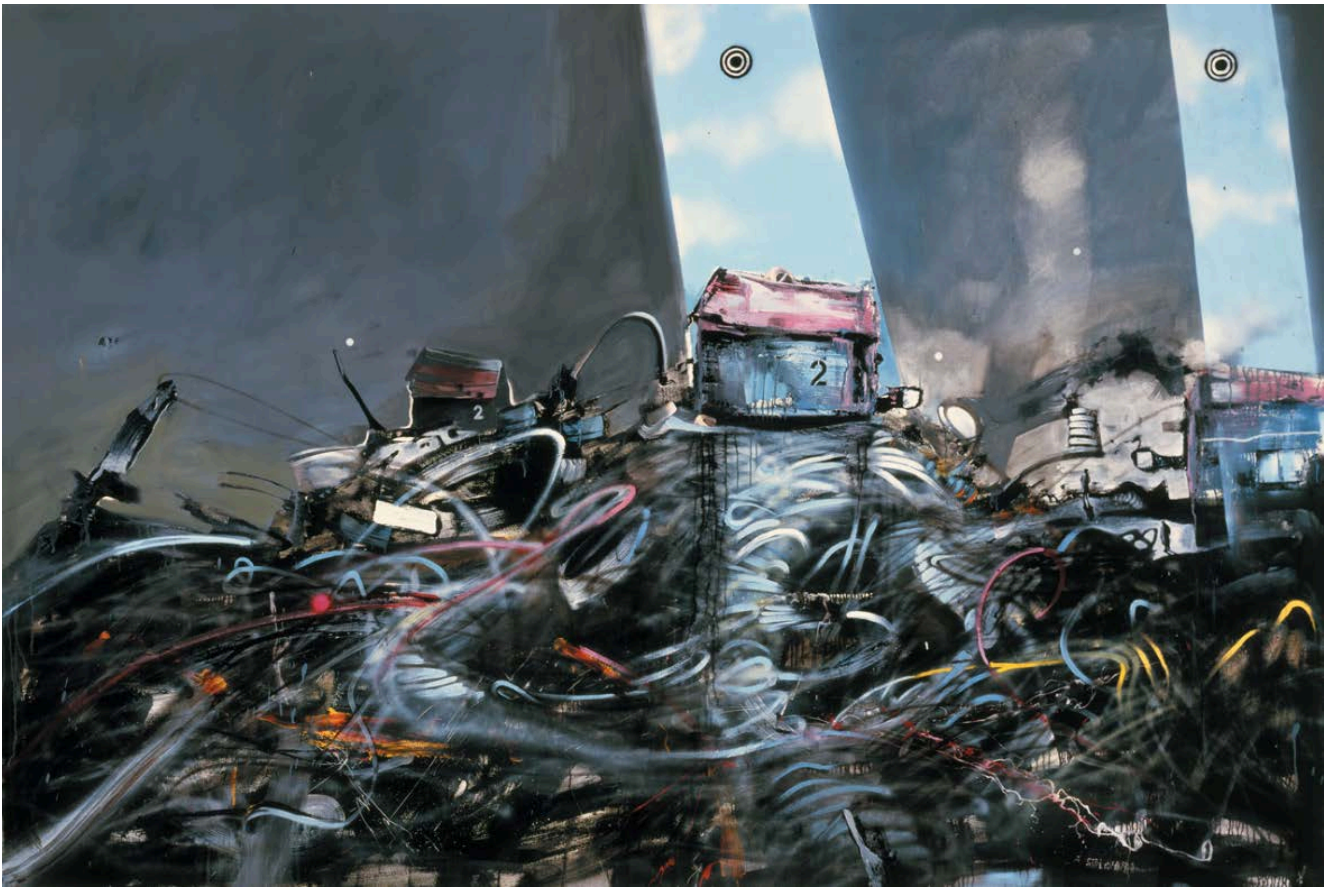
Graffiti elements also abound in the artist’s striking compositions that are rooted in his upbringing in the South Bronx as he has met with some of the city’s iconic graffiti art pioneers. The artist’s practice is largely devoted to exploring structures of power and how human beings cope with dire situations. “His paintings are often situated between contemporary and street or graffiti art elements that explore and document the human condition critically, socially and politically,” as per a statement.

Worried about the effects of post-traumatic stress disorder among soldiers today while being invested in the healing benefits of art, Jansen started the Marcus Jansen Foundation Fund in 2019 “whose mission is to highlight the conditions of economically disadvantaged areas or individuals and supports organizations that help veterans diagnosed with PTSD that are seeking art as a way to express.”

View select works from “E Pluribus Unum” in the slideshow above and then visit the Cornell Fine Arts Museum’s website for more details. The show will run through September 18 to January 3, 2021.



ALMINE RECH



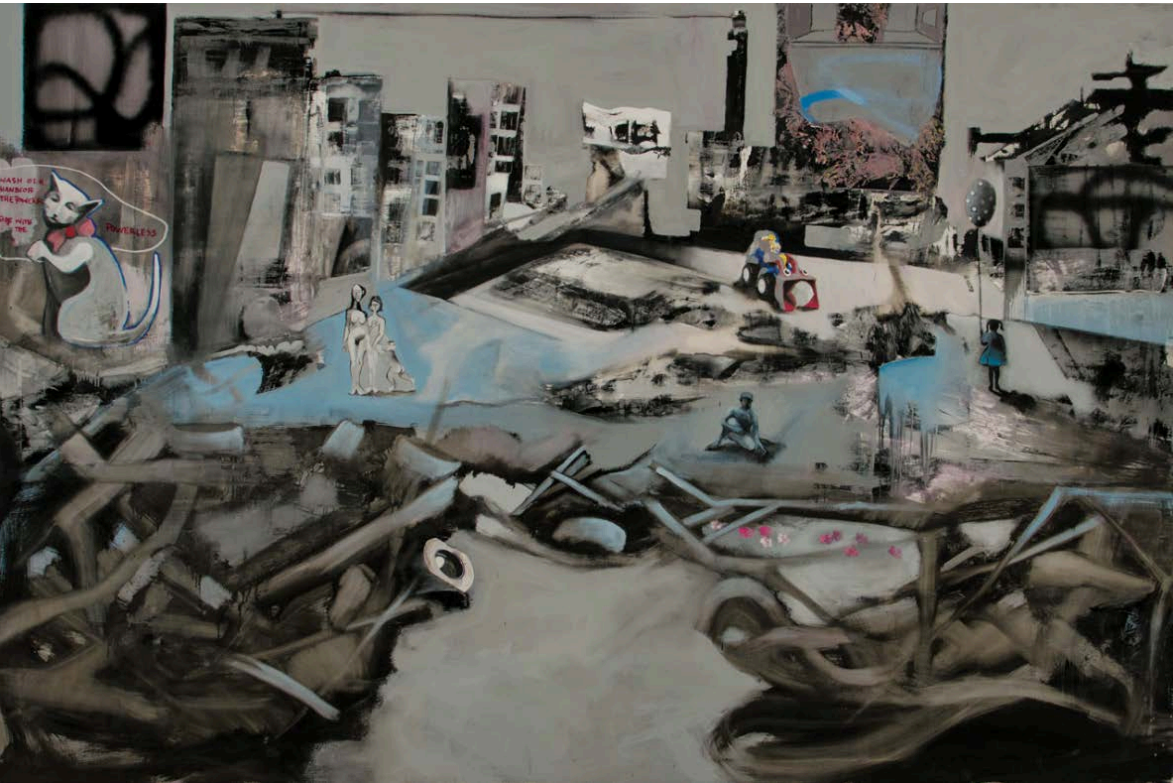
ALMINE RECH



ALMINE RECH



ALMINE RECH



ALMINE RECH

