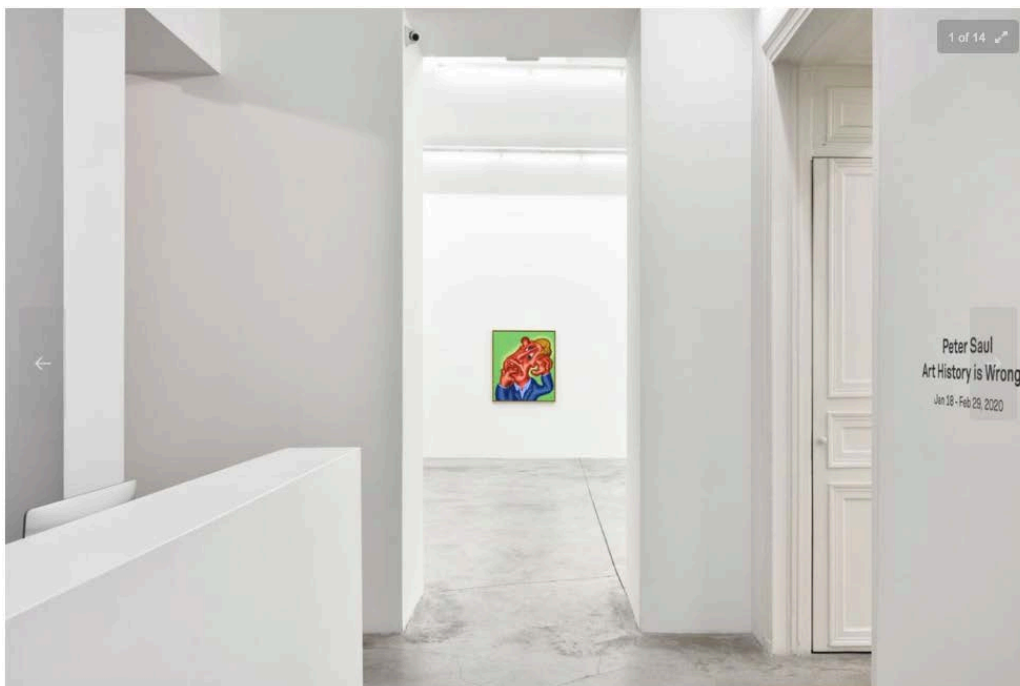


Press Reviews

Keith Estiler, 'Peter Saul Mounts Paintings of Madcap Characters in 'Art History Is Wrong' Exhibition', Hypebeast, January 2020

Peter Saul Mounts Paintings of Madcap Characters in "Art History Is Wrong" Exhibition

Trump is a shark while god and satan have a dysfunctional father-son relationship.



"Peter Saul: Art History is Wrong" Installation View Courtesy Almine Rech

Ahead of his major survey at the [New Museum](#) next month, seminal American painter [Peter Saul](#) is the focus of a new exhibition at Almine Rech in Paris. Entitled "Art History is Wrong," Saul mounts new acrylic paintings that star a diverse cast of madcap characters including Donald Trump as a shark, Napoleon Bonaparte as a dog which seemingly recalls the composition of Jacques-Louis David's iconic [Napoleon Crossing The Alps](#) (1801) painting, as well as god and satan in a dysfunctional father-son relationship.

With this fresh body of work, the artist continues to glean inspiration from '60s comic book culture, Chicago imagism, abstraction, and surrealism to develop explosive new pieces that shed light on socio-political issues while flipping art historical conventions. "With a certain exuberance, he shows us the world as it is: disorderly and chaotic," described the gallery in a statement.

Tour the exhibition above and then visit [Almine Rech's website](#) to learn more. "Art History is Wrong" is on view until February 29.


For more dynamic works, check out [snipe1's new pieces at Avenue des Arts in LA](#) that fuses graffiti with Japanese folklore.

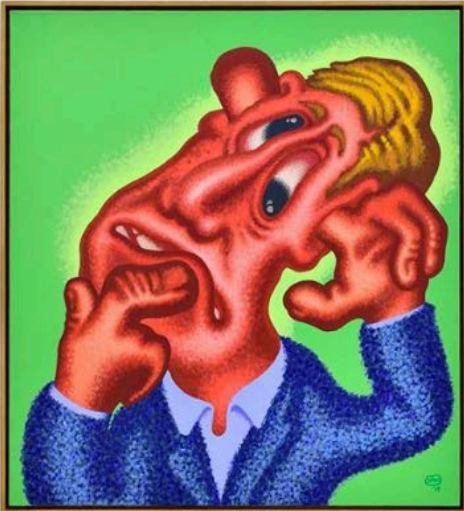
Almine Rech Gallery

64 Rue de Turenne





Paris 75003

France

[alminerech](#) 
Almine Rech [Voir le profil](#)



[Afficher le profil sur Instagram](#)

1,217 mentions J'aime
alminerech

Peter Saul 'Art History is Wrong' at Almine Rech Paris
Until February 29

- Peter Saul (b. 1934, San Francisco, CA) continues today with his ever-constant exploration of the most pressing issues of the world and art, making him one of the most influential painters for young artists. Saul's work expresses the quintessence of American art. Thousands of kilometres from the epicentre of Pop Art, a movement he affirms he does not belong to, while sharing its themes, Saul offers a more critical dimension, questioning both consumerist and imperialist models. Upon his return to the United States in 1964 he moved to California, the home of 'Funk' art, with which his pictorial, pop, and surrealist practice found an echo. Pop in a different vein, dazzling Funk, his art is a new way of making historical painting with the colors and clashes of today, just as his way of rewriting the masterpieces of painting prefigures Bad Painting and its success in the 1980s. He has also been consistently attentive to world chaos. The Vietnam War, the struggles for civil rights, American presidents (from Ronald Reagan to Donald Trump), ecology, junk food and cigarettes are among the powerful themes he has addressed in his work.

• [#PeterSaul](#) [#AlmineRech](#) [#AlmineRechGallery](#) [#AlmineRechParis](#) [#Paris](#)

[afficher les 11 commentaires](#)

Ajouter un commentaire... 