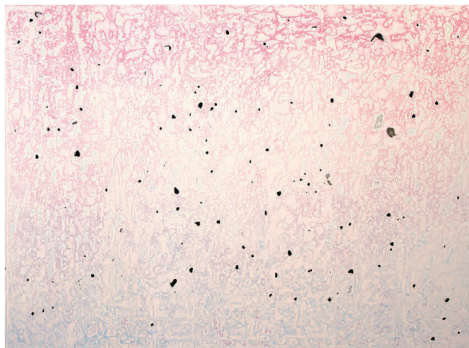




Georgia O'Keeffe's *Music, Pink and Blue No. 2, 1918*

"Renzo Piano's latest masterpiece, the Whitney Museum's new home in Manhattan's Meatpacking District, will open on May 1 with what will be the largest exhibition of the museum's extensive permanent collection of 20th and 21st century American artists. The inaugural show, "America Is Hard to See," explores the ideologies and practices of 400 American artists over the past 150 years."



"The son of hippies, Kadar Brock uses abstraction as a way to connect with his upbringing, while expressing his doubts and beliefs. Brock's practice is shaped by the way an object is made and the materials that are used. He begins by taking his 'failed' works, and reworks them by reducing their surface, focusing on mark-making and paint. Working on each piece, while physically laying on top of it, Brock connects with the works personally, both physically and psychologically."

Kadar Brock's *derezdemibcowirtaxi (mlfm, jtg...)*, 2009-2014



"Creative Time and the Central Park Conservancy are producing a free exhibition, "Drifting in Daylight," honoring the conservancy's 35th anniversary. For six weeks starting in May, eight artists will perform participatory artworks will transform Park into a space of imagination and dialogue."

THE SEASON IN ART

Contributing Editor **Laura de Gunzburg** has her eye on two contemporary artists, one public art project, a monumental museum show and a fair that will literally envelop you in its art.

PORTRAIT BY JASON RODGERS



An installation by Korakrit Arunanondchai at MoMA PS1, 2014

"This year, Frieze Projects, the not-for-profit program at Frieze New York, will feature a site-specific installation by Korakrit Arunanondchai, a series of high-tech massage chairs throughout the fair. With this installation, the Bangkok-raised artist will create an immersive environment in which viewers are invited to lose themselves in a multi-sensory space."



Sam Moyer's *Breakers III*, 2014

"Sam Moyer creates from images and materials found in everyday life. Influenced by her background in photography, Moyer's work is often monochromatic and modular, while still emphasizing pattern, texture and an illusion of tangibility. She manipulates stretch fabrics, ink and bleach to achieve minimal abstraction."